

Nvidia Stereo Settings

3D PLURAVIEW

Nvidia Stereo Settings for 3DPluraView

In this Document we will explain how to Reset and Enable Stereo on our 3D PluraView System with Nvidia Quadro Cards.

Make sure the Following is set before we Start.

- Workstation is Set and Running
- PluraView is Powered on and connected to your Workstation.
- In Case of Adapters please only use the Ones delivered with your PluraView System

Step 1:

Plug the PluraView system into the Display Ports of your Nvidia Quadro Card as Seen in the Picture.

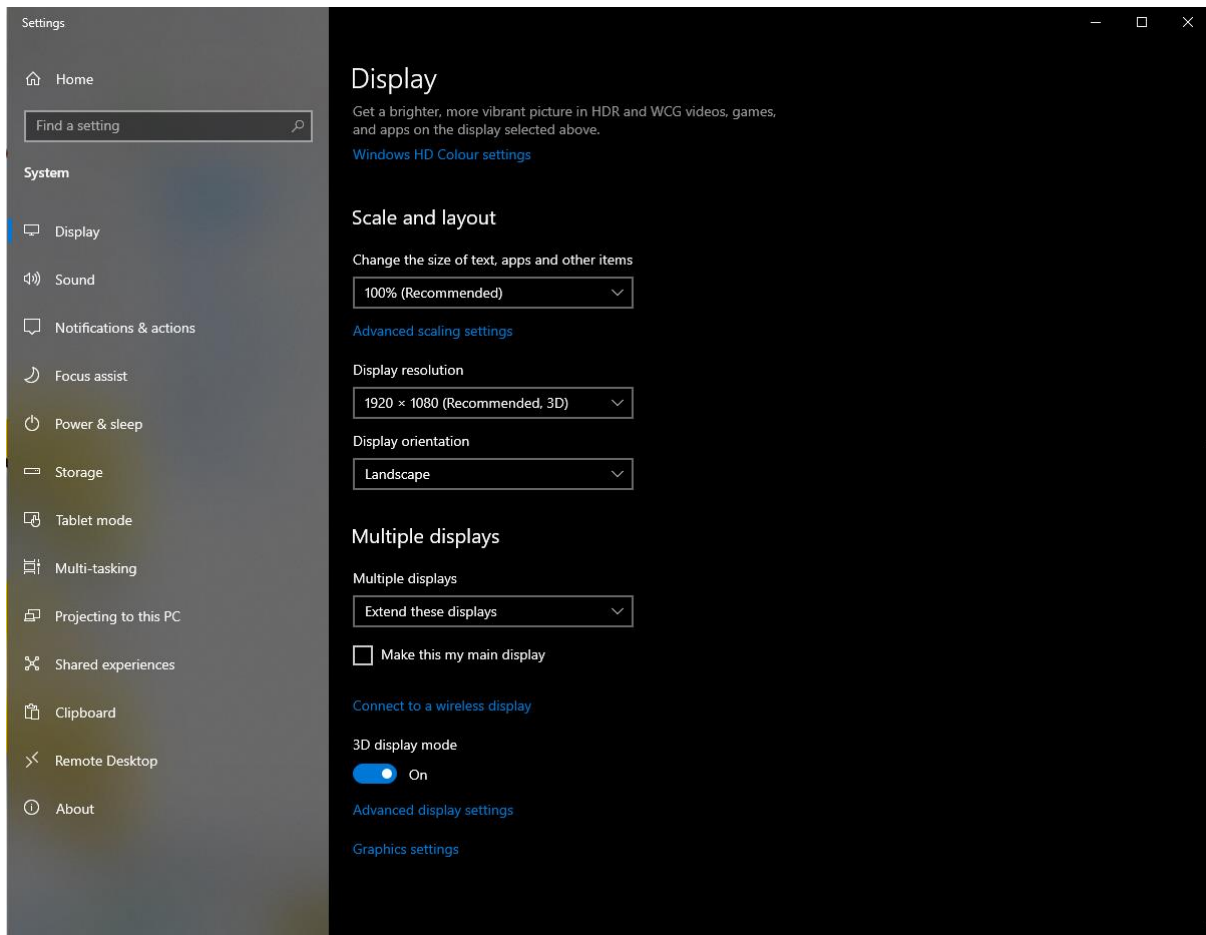
- Bottom Labeled Cable -> Port 1
- Top Labeled Cable -> Port 2



Step 2:

Right Click on your Desktop and go to Display Setting.

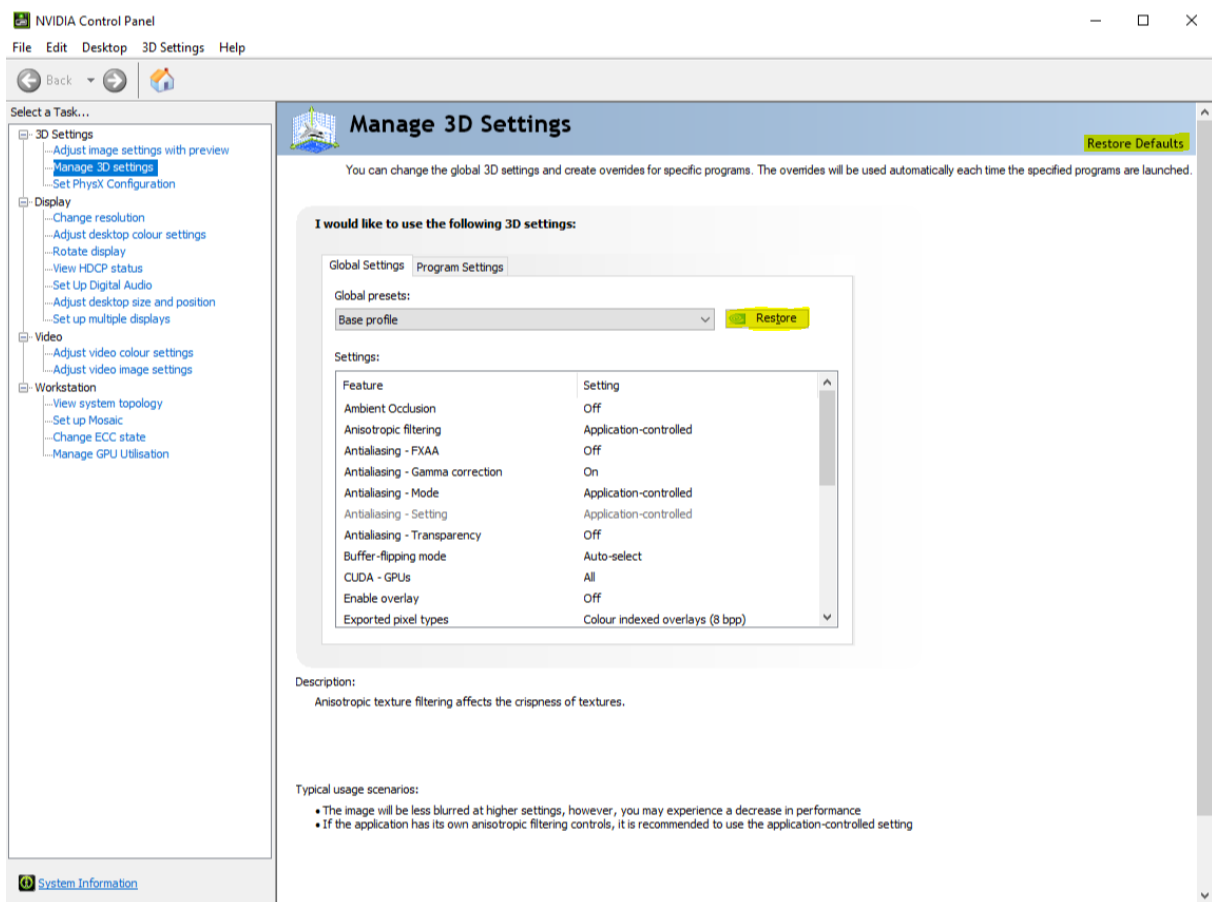
- Check if **both** Displays are shown
- Make sure the **Bottom** Display is the **Main** Display.
- See if both Displays are at the same Resolution:
 - 28" 4k PluraView -> 3840 x 2160 (Recommended 3D)
 - 27" WQHD PluraView -> 2560 x 1440 (Recommended 3D)
 - 24" FullHD PluraView -> 1920 x 1080 (Recommended 3D)
 - 22" Compact FullHD PluraView -> 1920 x 1080 (Recommended 3D)
- Check if 3D Display mode is set to -> **ON**



Step 3:

Right Click on your Desktop and go to **Nvidia Control center**.

- Open Manage 3D settings.
- Hit **Restore Defaults** and click on **Yes** and **Apply**.
- Hit **Restore** on the **Base Profile** and click on **Yes** and **Apply**.
- After this **Restart** your Workstation.



Step 4:

Open the Nvidia Control center again and navigate to **Change resolution** check if Both Displays have the same Settings as Following:

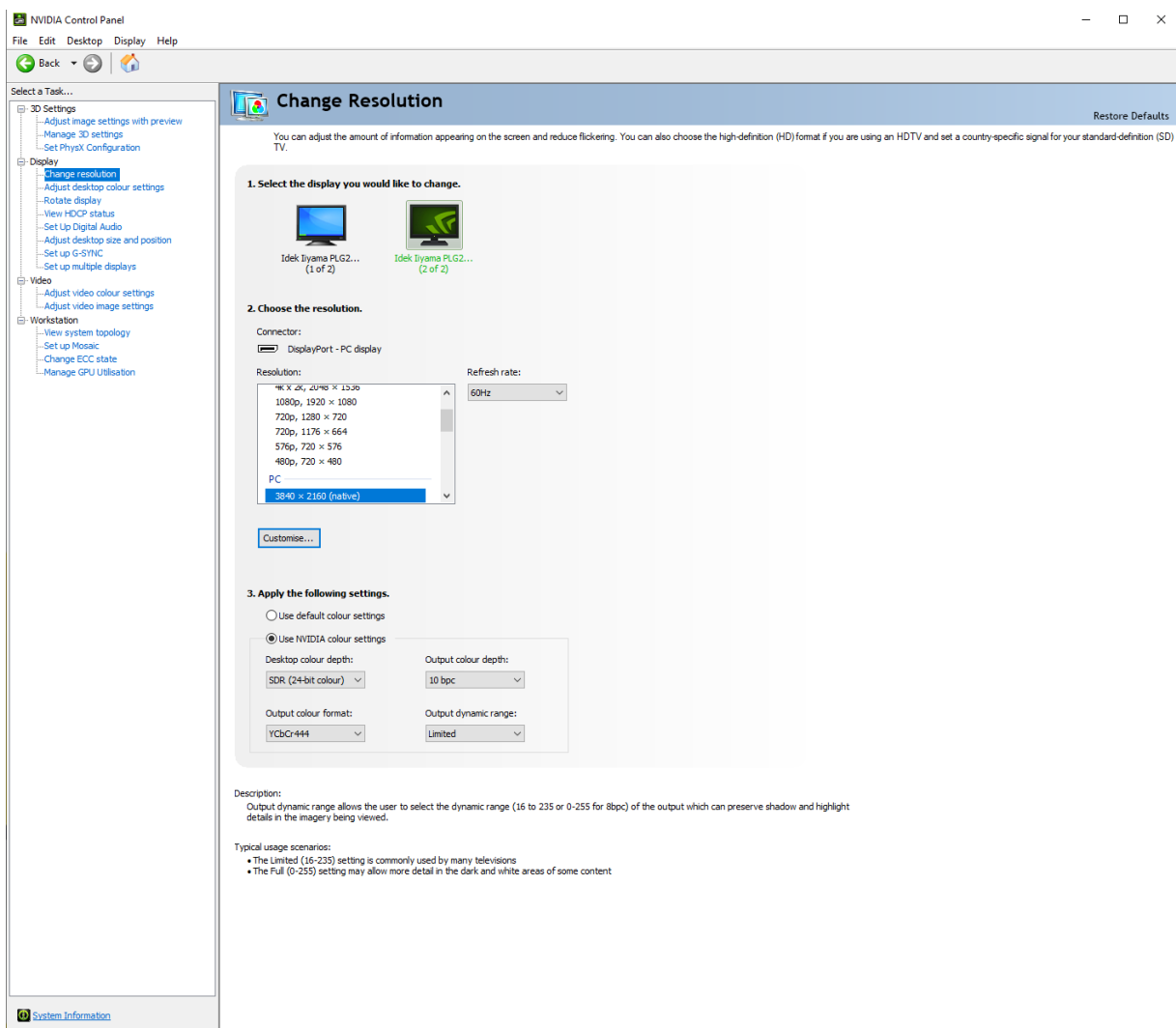
- Resolution (As mentioned in Step 2)
- Refresh rate
 - 4k, WQHD, FullHD -> **60Hz**
 - 24" FullHD -> **144Hz**
- Nvidia Colour settings
 - Output colour format: -> **RGB**
 - Output dynamic range: -> **Full**
 - Output colour depth: -> **8bpc**

Our 28" 4k PluraView Model can drive with **10Bit** Colour depth.

Therefore, you need to set different Colour settings.

- Output colour format: -> **YCbCr444**
- Output dynamic range: -> Limited
- Output colour depth: -> **10bpc**

Side Note: If Top and Bottom display are showing different colours please follow the instruction for **10Bit** above.

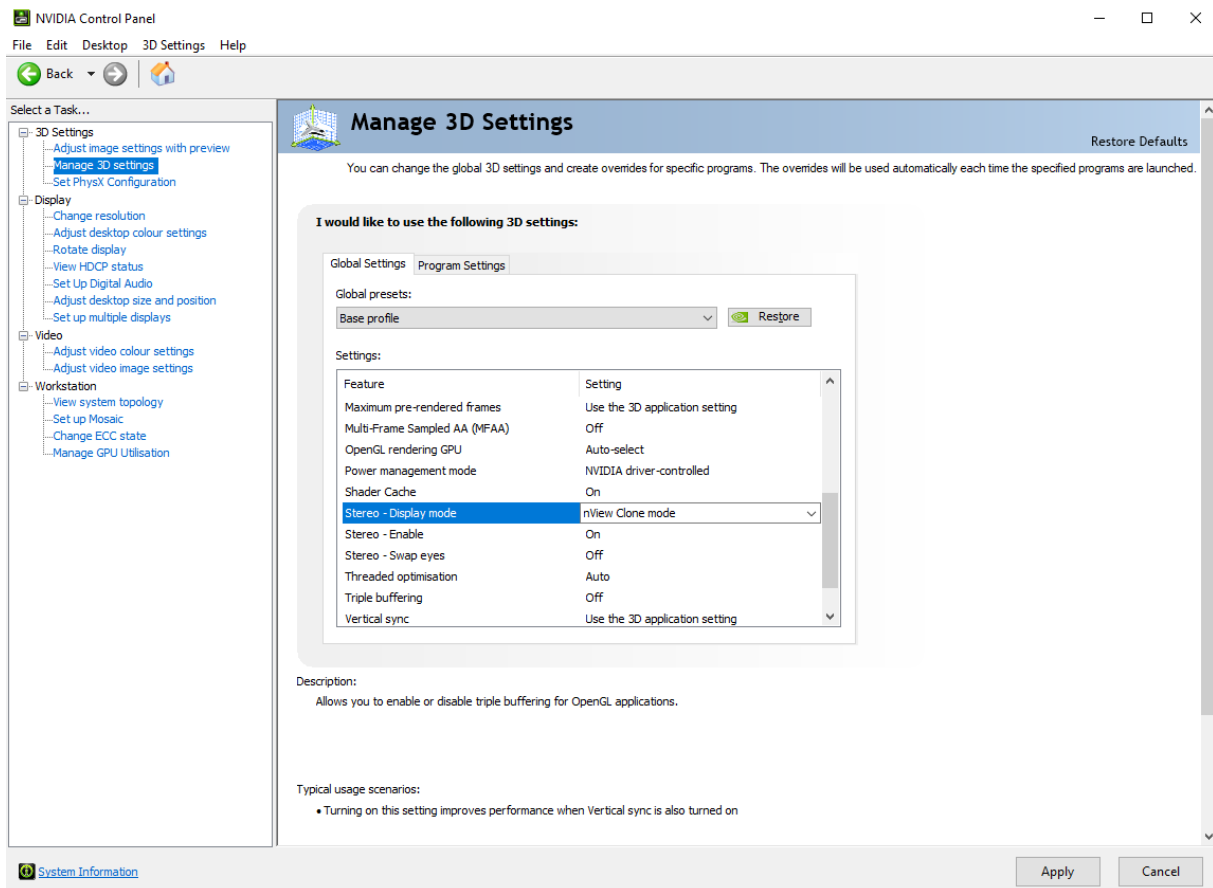
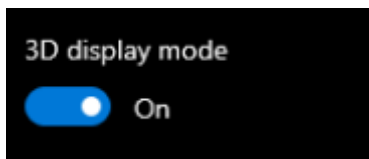


Step 5:

Inside the Nvidia Control Center go to **Manage 3D Settings**.

- Stereo – Display mode -> **nView Clone mode**
- Stereo – Enable -> **On**
- Stereo – Swap eyes -> **Off**

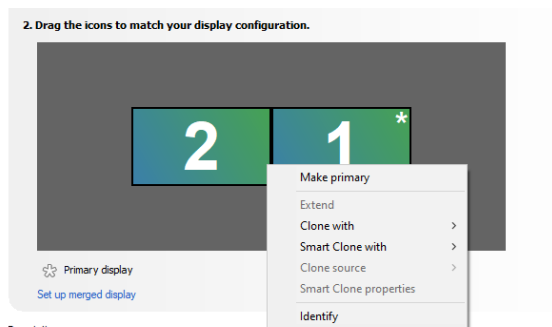
Stereo Enable might be unable to switch, depending on your Windows Version. Make sure you followed Step 2 and Enabled 3D Mode under **Windows!**



Step 6:

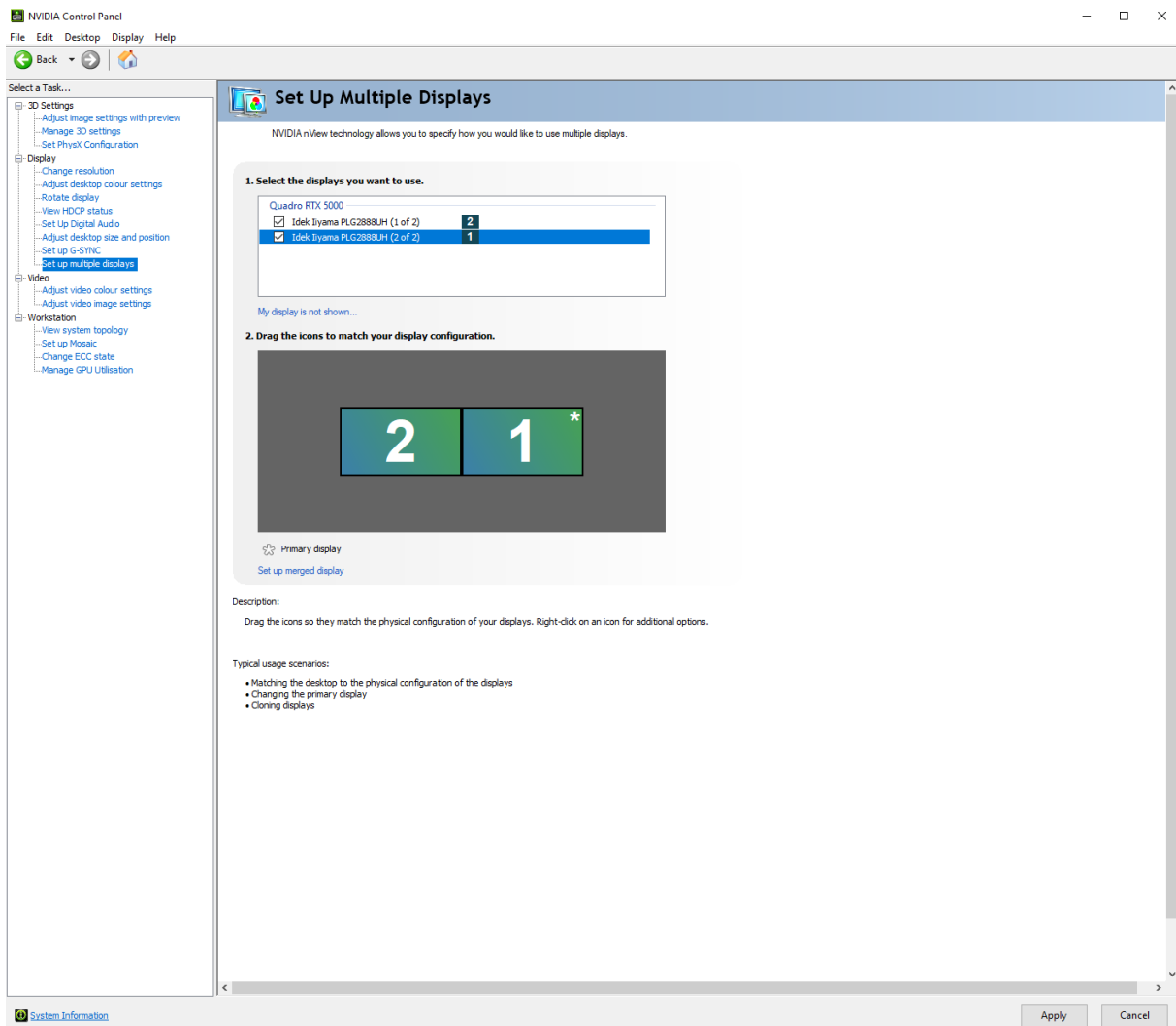
Navigate to **Set up multiple displays**.

- Make sure the **Primary Display** is the Bottom Display (Marked with a Star)
 - You can change and Identify the **Primary Display** with a **Right Click** on the Display.
- **Right Click** on your Display with a Star
- Chose **Clone With -> 2**
- Hit **Apply**
- Wait until Nvidia control center asks to **Confirm** your Setting



Description:

Drag the icons so they match the physical configuration of your displays. Right-click on an icon for additional options.



Step 7:

After this your setup is done. To Check if everything is working, we recommend using a Tool called REDBLUE.exe

This will Display Red and Blue Box on each Display, witch if everything is correctly setup, will overlap on the Mirror.

- **Red** Box shows on your **Right** eye on the **Top** Display.
- **Blue** Box shows on your **Left** eye on the **Bottom** Display.

This Tool and all can be Found on our Website as well as current Drivers.

- [REDBLUE.exe](#)

Workstations (Treiber)

- 📁 [PULSARON](#) (AMD)
- 📁 [CENTURON](#) (INTEL)

Professional Graphics Card

- 📁 [AMD](#) (Radeon PRO & FirePRO)
- 📁 [NVIDIA](#) (TESLA / QUADRO / NVS)

Workstation (Tools / Benchmarks / Diagnostik)

- 📁 [Benchmarks](#)
- 📁 [CPU-BurnIn](#)
- 📁 [CPU-Diagnostic](#)
- 📁 [Memory RAM](#)

- 📁 [HW Temprature Tools](#)
- 📁 [HW Reporting](#)

Feel free to Contact support@schneider-digital.com with all Questions

or Call in directly into our Office: +498025993010