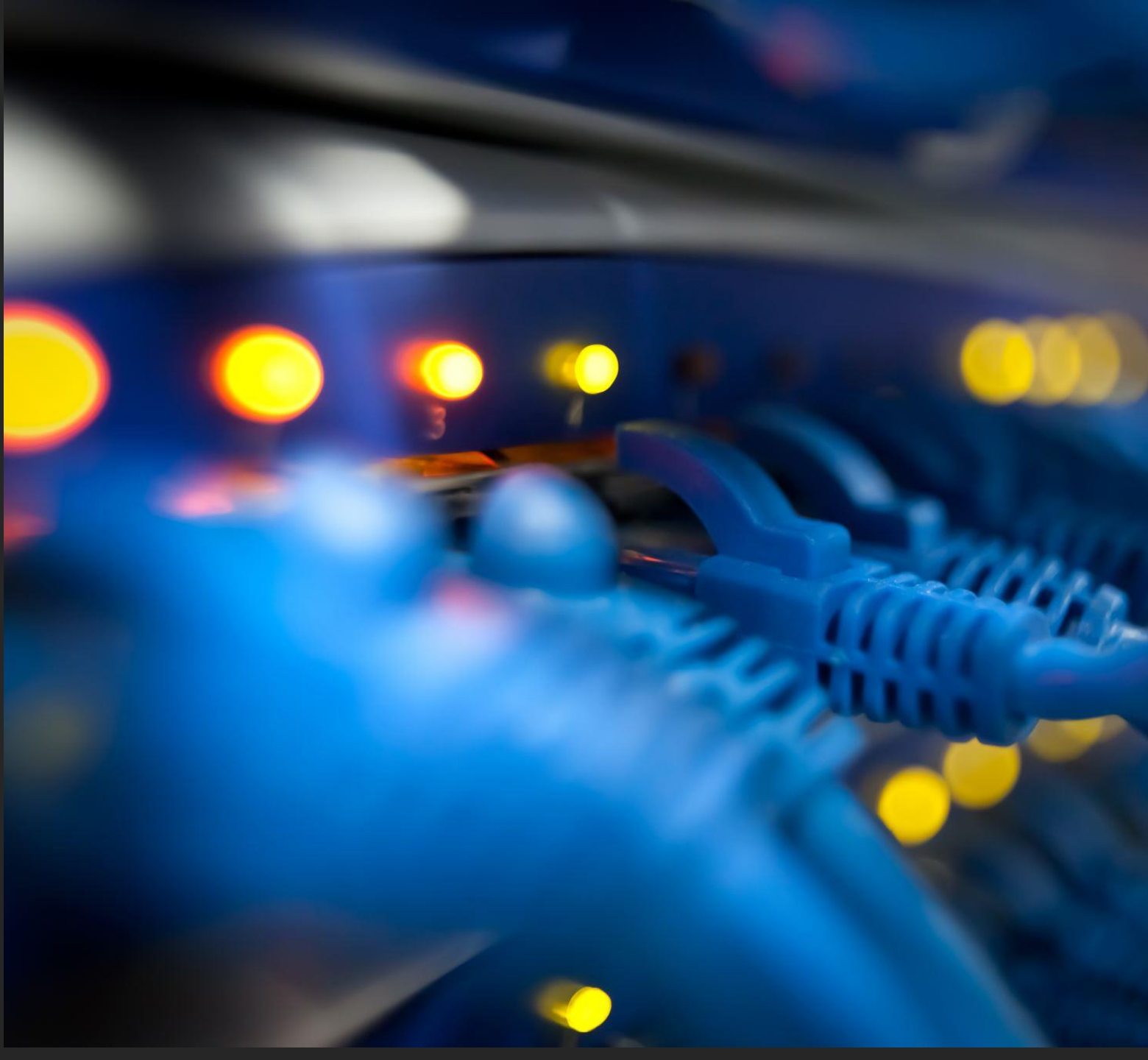
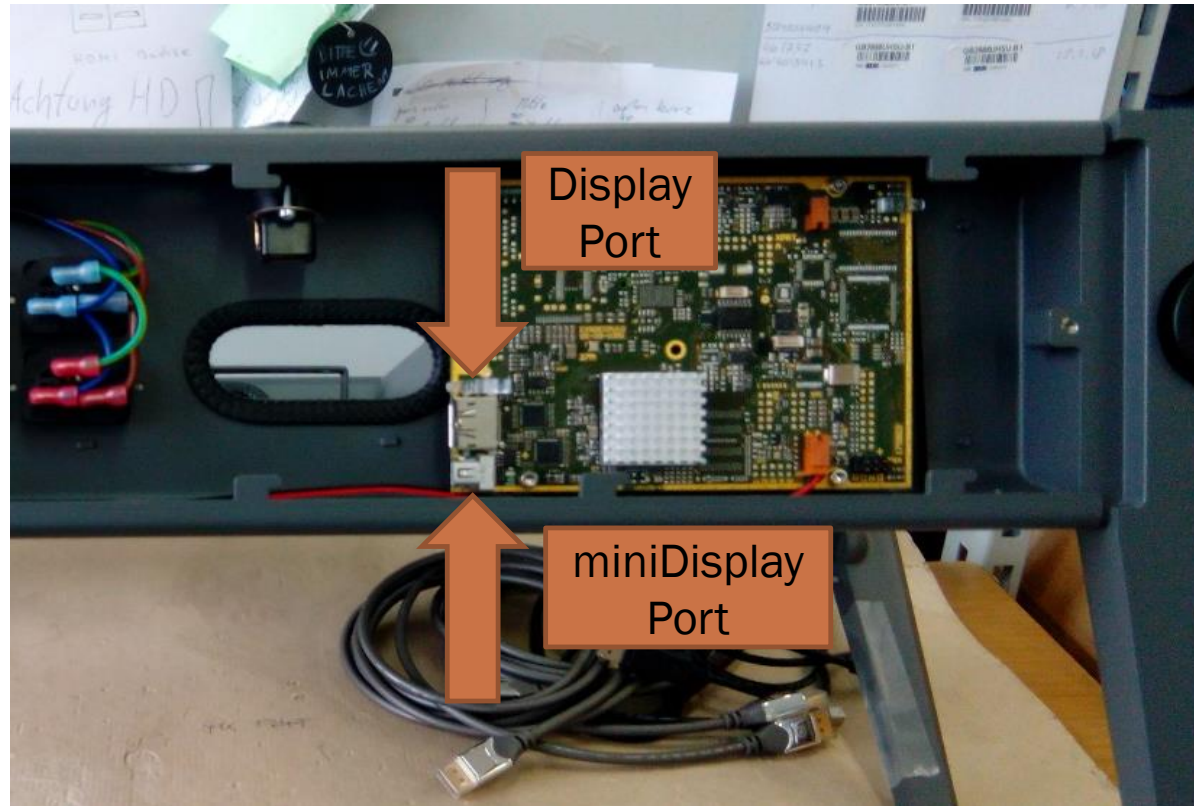

CHANGE THE DISPLAYPORT CABLE TO THE UPPER MONITOR

3D PLURAVIEW

4K AND 2.5K





ARRANGEMENT

of the DisplayPort (signal input)
and miniDisplayPort cable (signal output)
on the mirror card

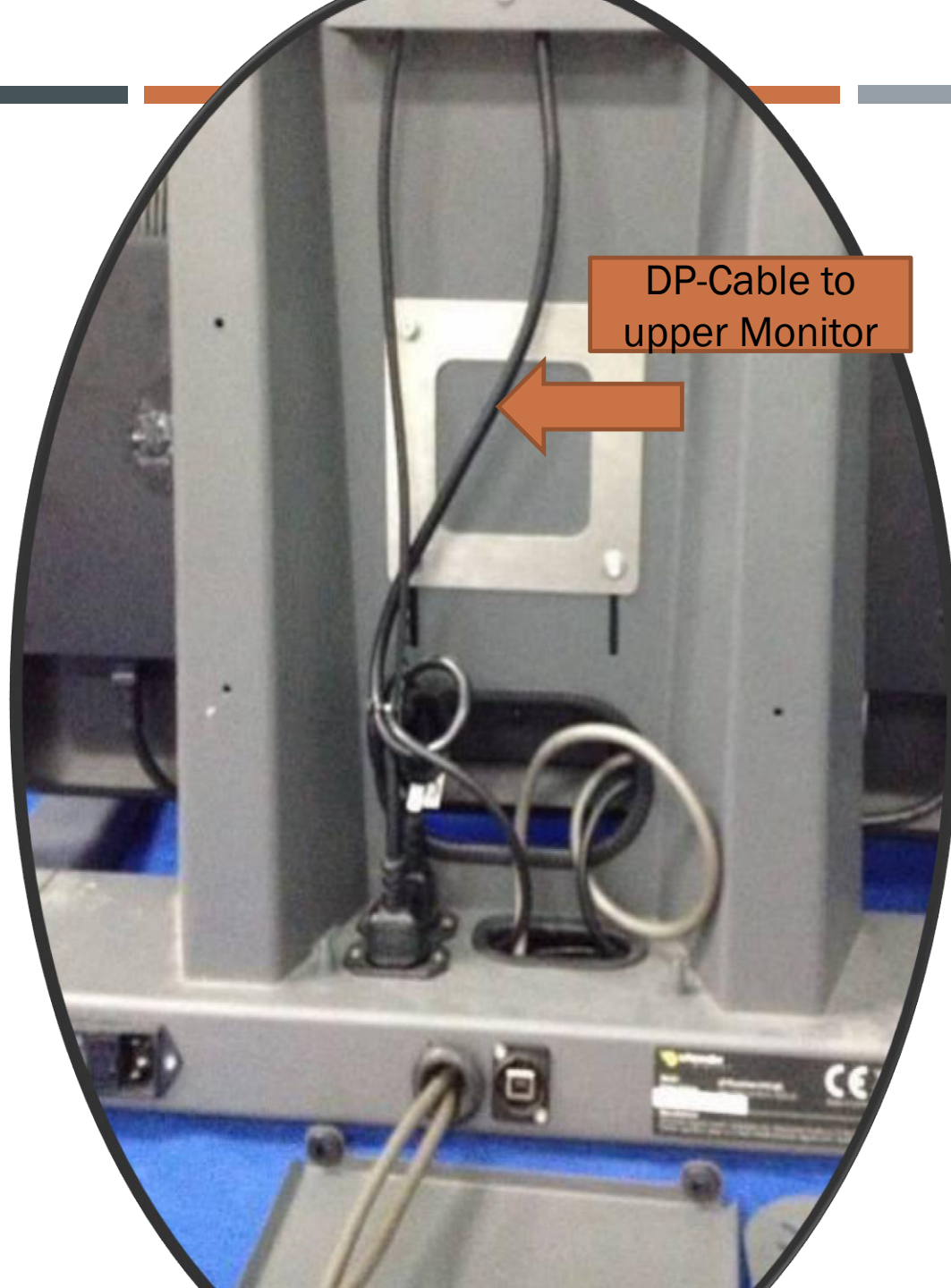


CABLES

connected to mirror card

DP-CABLE

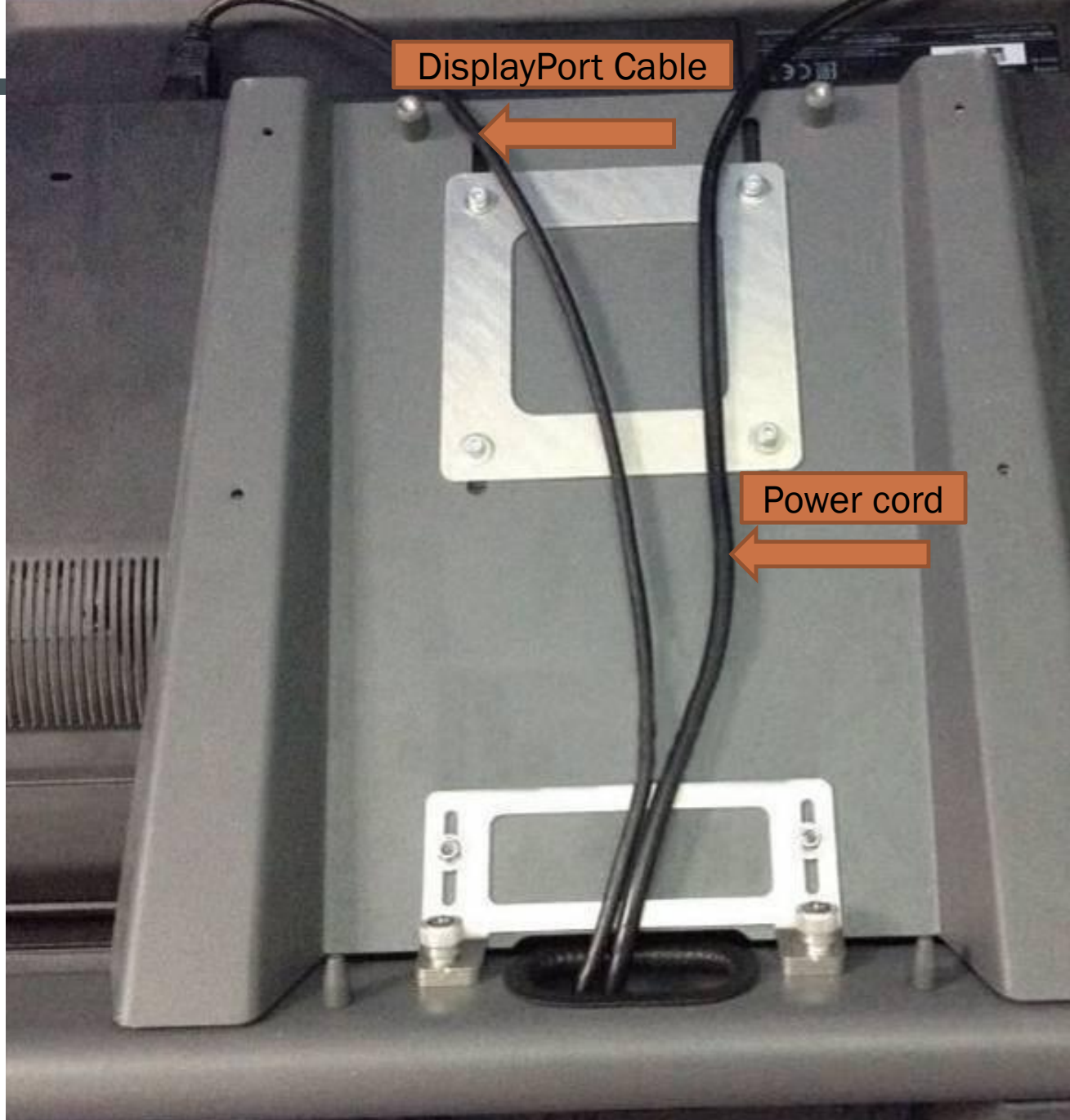
to the upper monitor



DP-Cable to
upper Monitor

UPPER

Monitor



-
1. Remove the complete holder with the upper monitor
 2. Remove the back cover of the 3D PluraView housing after loosening the Allen screw
 3. Place the 3D PluraView on the table with the back side up.
 4. Remove the bottom plate after loosening the Allen screws. Attention, do not damage the ground wire (yellow / green)
 5. Pull the miniDisplayPort connector out of the mirror card and remove the cable from the housing
 6. Insert the miniDisplayPort plug of the new miniDisplayPort to DisplayPort cable from the top into the foot section and connect the plug to the miniDisplayPort on the mirror card
 7. The end with the DisplayPort connector lead through the housing upwardly toward upper monitor.
 8. Place the lid on the housing base again and screw
 9. Put the 3D PluraView back on its feet and fix the back.
 10. Attach the upper monitor and connect the power cord and the DisplayPort cable to the top of the display.